

# PROWAD LINK

Protect & Prosper

Interreg  
North Sea Region  
PROWAD LINK  
European Regional Development Fund



## Sediment Solutions Side Event at 14th TGC Partnership Hub

Wilhelmshaven  
28 November 2022

© A. Schnabler



United Nations  
Educational, Scientific and  
Cultural Organisation



The Wadden Sea  
World Heritage Site  
since 2009

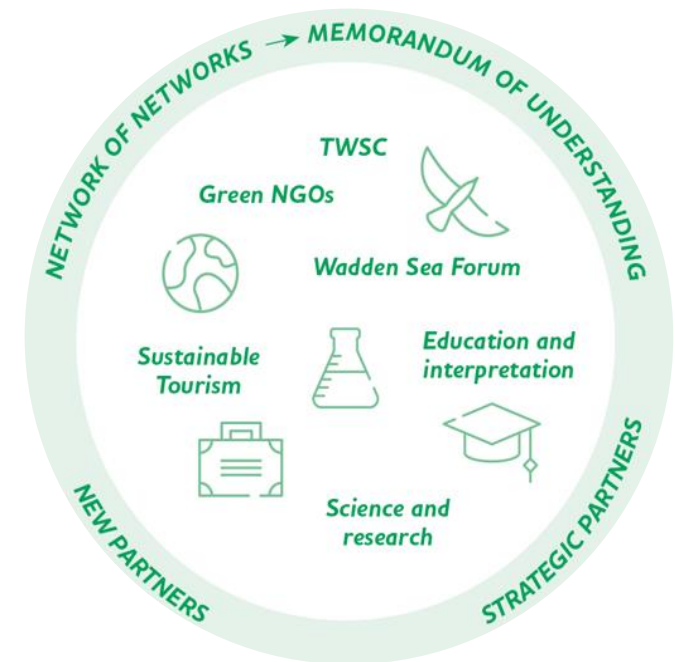


PROWAD LINK

# Partnership Hub

## Network of networks

- Cross-sectoral network
- Trilateral network
- Connect, strengthen existing networks and create and activate new networks in support of the WSWH
- Communicate and raise awareness about the WSWH

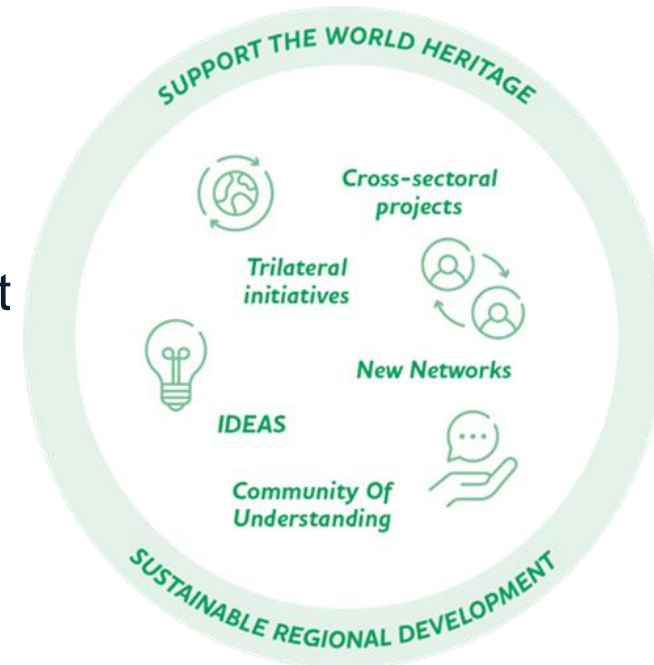


# Partnership Hub

## Partnership approach

Tool to support & further sustain and develop network(s) and ideas e.g. via:

- Supporting in project development / project implementation
- Facilitating transnational knowledge production
- Upscaling / connecting regional activities and networks
- Support in resource mobilization



# Partnership Hub

...to further support the CoU?

Option for:

- Network management support
- Support further exchange of knowledge / activities

In presence of:

- Interest and active role from the CoU participants
- Trilateral and cross-sectoral activities
- WSWH relevant topics / for its further protection

# WSWH Exchange Platform

Stay connected and collaborate

Online tool with public and log-in areas for WSWH-relevant activities, featuring different functions:

- **Activities:** learn about projects and their results
- **Workgroups:** interact with others
- **Networks:** learn about and join long-standing networks
- **News:** inform and stay informed
- **People:** meet your partners
- **Material:** find and share relevant publications

# WSWH Exchange Platform

To be launched soon...

Interreg  
North Sea Region  
PROWAD LINK  
European Regional Development Fund



 Wadden Sea World Heritage Exchange Platform



## Hello and welcome to the Wadden Sea World Heritage Exchange Platform!

The collaborative platform of the Trilateral  
Partnership in support of the Wadden Sea World  
Heritage Site. [Skip to main content](#)

# WSWH Exchange Platform

To be launched soon...

Activities

Workgroups

Networks

News

People

Materials



## Protect and Prosper in the Wadden Sea World Heritage



Working with partners to protect the Wadden Sea World Heritage for the benefit of nature and people.

Since the inscription of the Wadden Sea on the World Heritage List in 2009, many partners have been invited to engage with the protection of the Wadden Sea and to benefit from this engagement.

8 following



## Sediment Solutions



Sediment is an important asset of the trilateral Wadden Sea. For nature and for human demands. In the three countries there is a lot of knowledge and knowhow about the behaviour of sediment (sand and mud) and the management of it. The Programme towards a rich Wadden Sea took the initiative to start a Community of Understanding (CoU) Sediment Solutions.

5 following

# WSWH Exchange Platform

To be launched soon...

Activities

Workgroups

Networks

News

People

Materials



[View](#)

[Edit](#)

## News

Search...



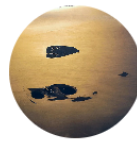
© Hans-Ulrich Rösner

### New guideline helps destinations to recognize boundaries of tourism and preserve values of the World Heritage Site

November 26, 2022



In the framework of Interreg project PROWAD Link and together with the NIT, WWF has developed the "Wadden Sea Tourism Radar" – a method to help destinations identify in time when and in which areas this limit is being reached.



© Vincent van Zeijst

### Bird flu causes devastating losses among sandwich terns in the Wadden Sea

November 26, 2022



First reports of dead sandwich terns in colonies in France caused by the high pathogenic avian influenza (HPAI) virus, or bird flu, were released at the end of May. Within a few days, the virus swept through the breeding colonies, killing hundreds and up to thousands of adult birds.



United Nations  
Educational, Scientific and  
Cultural Organisation



The Wadden Sea  
World Heritage Site  
since 2009



PROWAD LINK



# WSWH Exchange Platform

To be launched soon...



## Wadden Sea World Heritage Exchange Platform

Activities

Workgroups

Networks

News

People

Materials



[View](#) [Edit](#) [Delete](#) [Members](#)

← [Back to workgroups overview](#)



### Test Group

test

[Leave group](#) [Unfollow](#)



Create Post

Post

Material



Title

Title

Submit



Filter



United Nations  
Educational, Scientific and  
Cultural Organisation



The Wadden Sea  
World Heritage Site  
since 2009



WADDEN SEA  
WORLD HERITAGE

PROWAD LINK

# PROWAD LINK

Protect & Prosper

Interreg  
North Sea Region  
PROWAD LINK  
European Regional Development Fund



**Thank you for your attention!**

© A. Schnabler



United Nations  
Educational, Scientific and  
Cultural Organisation



The Wadden Sea  
World Heritage Site  
since 2009



PROWAD LINK