

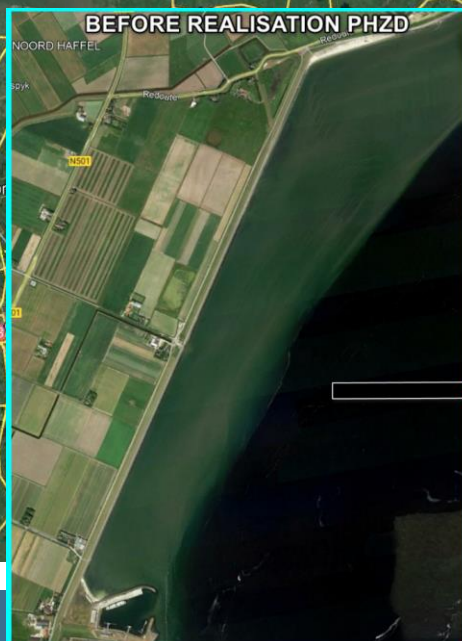
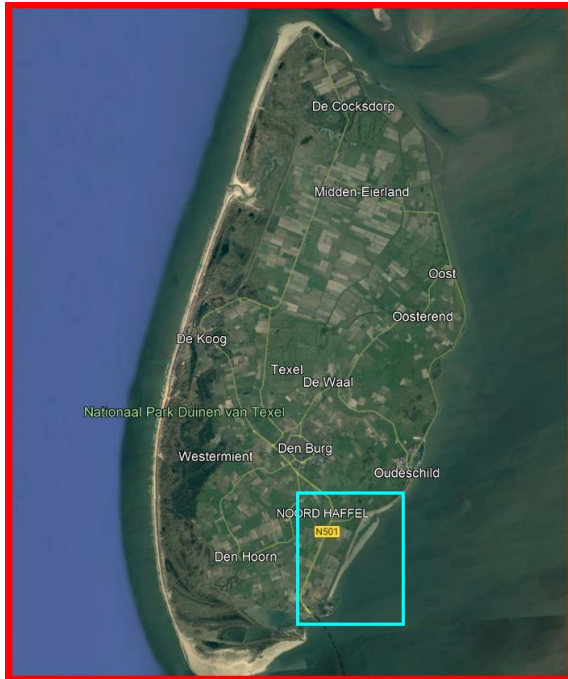


NL – Prins Hendrik Zanddijk (PHZD)

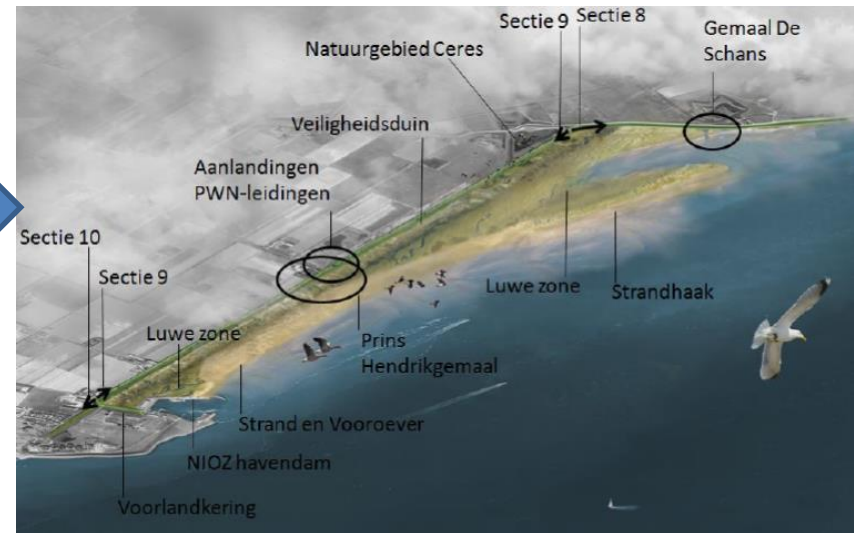
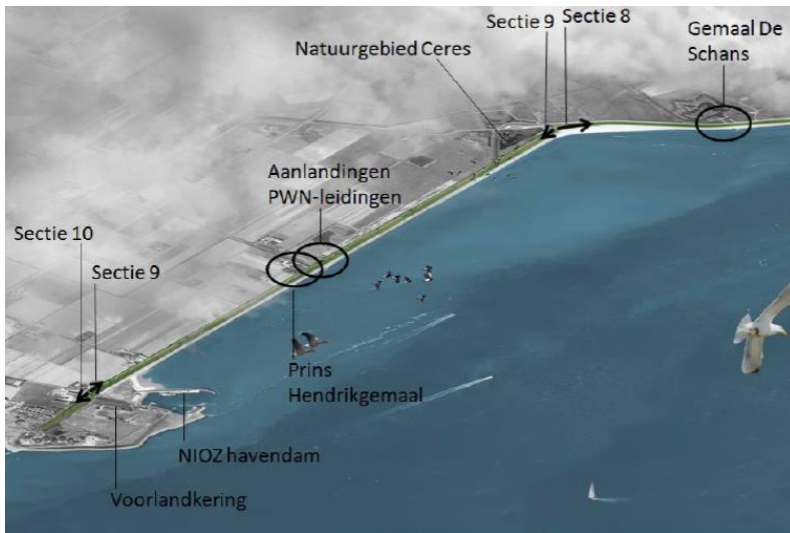
Workshop Programma naar Rijke Waddenzee

28/11/2022





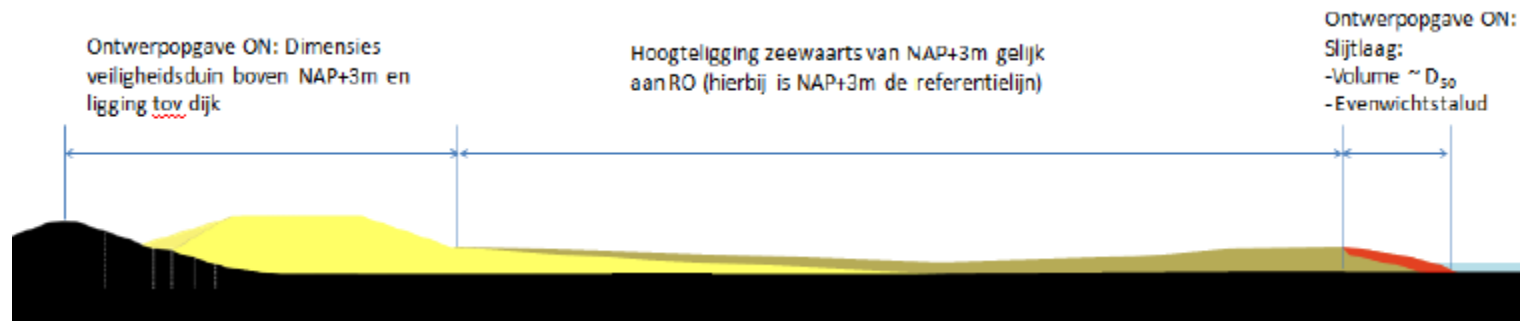
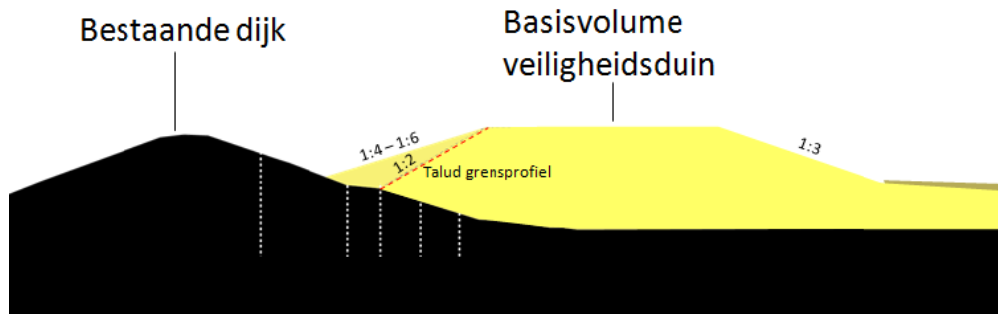
PHZD – general information



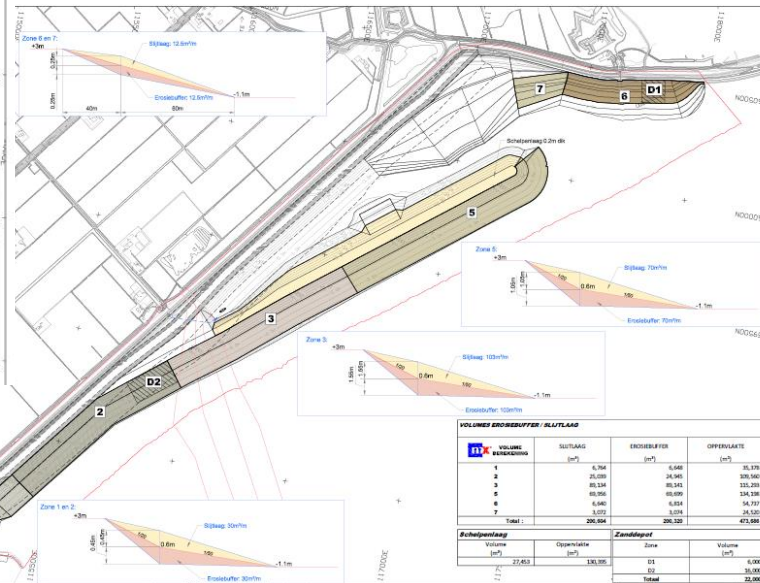
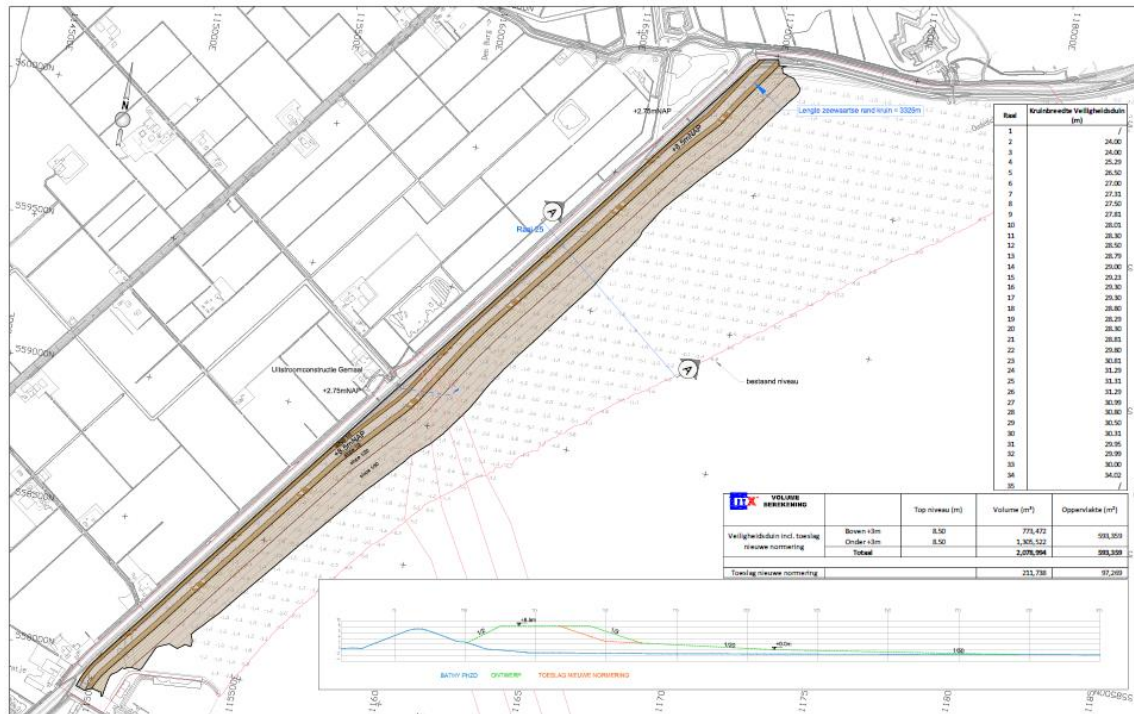
- Key numbers:
 - Volume sand 4.500.000m³ from Q2N
 - Volume sand (coarse) 450.000m³ from L15E
 - Maram grass 230.000m²
 - Bicycle path 3000m
 - Walking path (600m) with view point



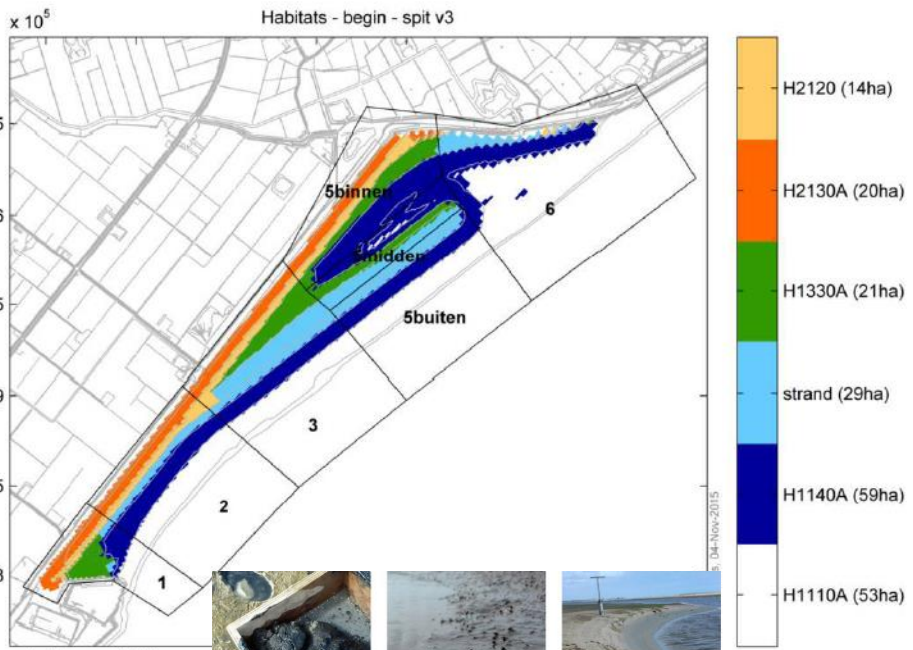
PHZD – Primary Function: Water Safety



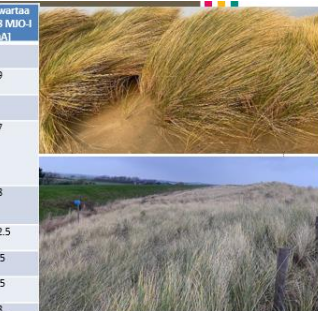
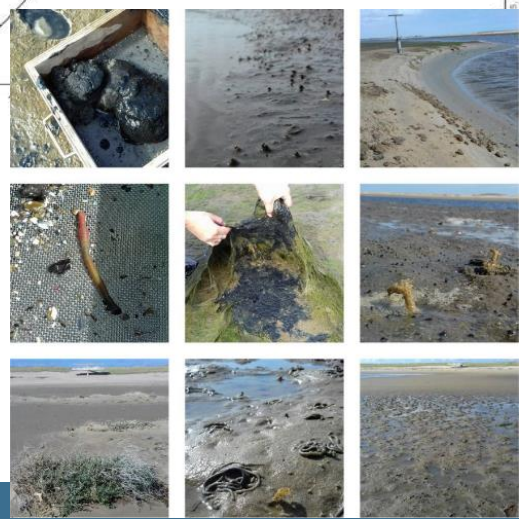
PHZD – Primary Function: Water Safety



PHZD – Secondary Function: Ecology

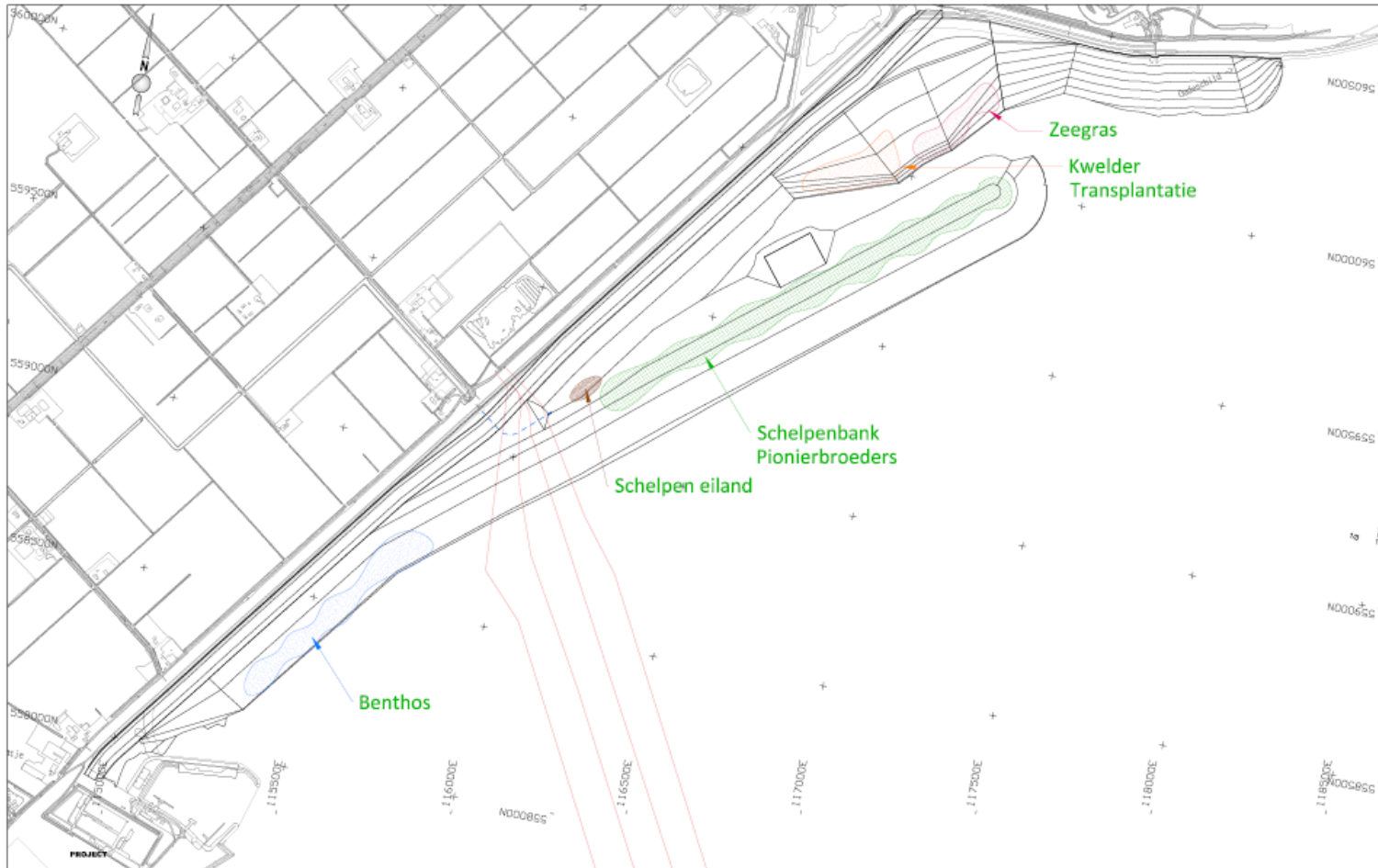


Objecten	Habitats/Leefgebied	Min	Max	Hoogtefligging [mNAP]	Realisatie JDN [ha]	Geoptimaliseerd referentieoever na 5 jaar [ha]	Kwartaal 14 MJO-1 [ha]	Kwartaal 17 MJO-1 [ha]	Kwartaal 18 MJO-1 [ha]
Duin	H2120 Witte duinen	0 ha	40 ha	>+2 tot +3.2	4	4	4	4	4
	H2130A Grize duinen kalkrijk	0 ha	40 ha	>+3.2	29	30	29	29	29
	H2150	0 ha	5 ha	>+3.2	4	4	4	4	4
Strand + vooroever / Strandhaak	Duindoornstruwelen	hA	45 ha	Geen max	73	63	70	67	67
	H1110A: Permanent overstromende zandbanken getijdengeb.	en	50 ha	Geen max	-1.1 tot +0.6	50	58.5	55	58
Luwe Zone	H1140A Slik zandplaten getijdengebied	10 ha	40 ha	>+2.2 of >+0.6	12.5	12.5	12.5	12.5	12.5
	H1310A Zilte pionier begroeiing zeekraal	1 ha	5 ha	+0.4 tot +2.2	2.5	2.5	2.5	2.5	2.5
	H1320 Slijkgrasvelden	0 ha	5 ha	+0.4 tot +2.2	2.5	2.5	2.5	2.5	2.5
	H1330A Schorren en zilte graslanden buitendijks	20 ha	Geen Max	+0.6 tot +2.2	27	28	28	28	28



soort	territoria
Nijlgans	1
Eidereend	1
Wilde fend	1
Rondbekplevier	9
Scholekster	20
Stormmeeuw	2
Zilvermeeuw	1
Noordse Stern	1
Dwergstern	31
Graspleper	4
Witte Kwikstaart	1
Gele Kwikstaart	6

PHZD – Secondary Function: Ecology



PHZD – Biggest challenges during realisation

- Stormy weather -> drift sand
 - Drift sand screens => approx 14km planted during realisation
 - Paper pulp => approx 2000m³ of pulp applied during realisation
 - Maram grass as soon as possible
- Realisation of project in Waddenzee with strict nature legislation
 - Distances of disturbance
 - Conditions in permits
- Environment management => most project neighbors were negative towards project
- Logistics => mobilisation and demobilisation of all equipment necessary to realise project